

TECCON

heart of engineering

FMH WIZARD (FMVSS 201U)

- Simplified and user friendly markup of test points on the vehicle
- Significant time savings by successively guiding the user through the entire work process
- Error prevention - all calculations are carried out by the software
- Compliance with Laboratory test procedure FMVSS201U



FMH WIZARD (FMVSS 201U) FEATURES

Description

The FMH Wizard is a measurement software tool, which supports the determination of test points as per Test Procedure FMVSS201U in combination with a 3D measurement system.

The FMH Wizard successively guides the user through the entire markup process by picking the reference points according to TP FMVSS201U and guiding the user to the target point.

The software does all calculations on the surface like creation of planes, lines or intersections.

Traditional tools such as plumbs, tape measures or laser lines are no longer needed and just used for reference.



Basic system specifications

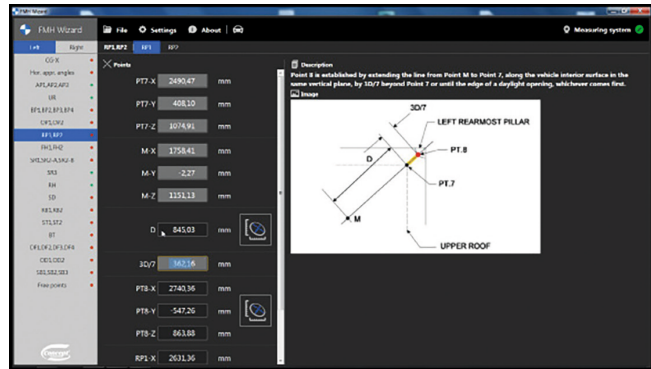
- Online coordinate data input out of tactile measurement system
- Function for manual data input in all phases of markup (to handle prototypes or missing parts)
- Multiple interfaces to state of the art CCM-systems available

Functions

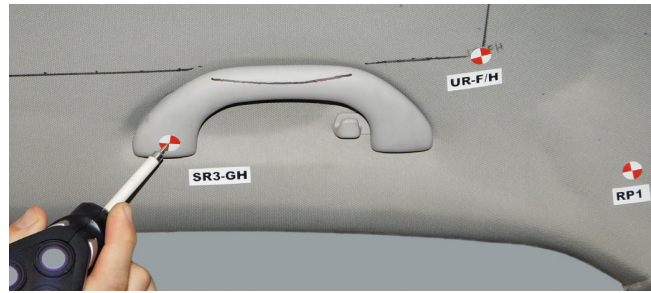
The software is able to process H-Points as well as CG-Head points as an input to start the markup process.

The following steps are completely managed by the FMH Wizard. It guides the user visually and acoustically to the exact location of the next point including creation of all support points out of test procedure, distance measurement along surfaces and determination of levels.

Intuitive User Interface



The clear and intuitive user interface makes the markup of lines or relocated targets easy and saves time in all markup phases.



The coordinate output of the CMM is processed and visualized in real time by the software. Interfaces to state of the art CMM-Systems are available and can be provided customized on request.



A new feature of the FMH Wizard is the crosshair, which makes it even easier to markup the points. Acoustic and visual signal indicate the distance to target in real time and help the user to move to the exact point along the interior surface.

All created points can be exported to be able to compare the points with CAD Data or simulation data.