

INTRUSION SPHERE According to ECE-R21 ANNEX VI



INTRUSION SPHERE

ACCORDING TO ECE-R21 ANNEX VI

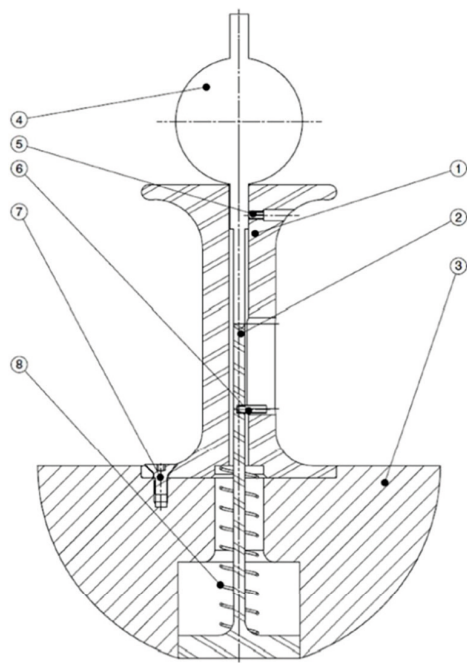


Website

System Description

The projection measuring device is used for the precise determination of the height of projections, such as switches, pullknobs, etc., located within the reference area. The device consists of a hemispherical head and an integrated

dial gauge, allowing for accurate readings of the measured height. Its robust construction ensures stability and durability, while the intuitive functionality enhances user-friendliness.



1	Handle
2	Ram
3	Hemispherical headform
4	Dial inidicator
5	Locking screw Dial indicator
6	Locking screw ram
7	Countersunk screw
8	Return spring

Product Features	
Display	analog, digital (optional)
Measuring Range	0 - 30 mm
Resolution	0.1 mm
Pointer Rotation	10 mm
Dimension	Ø 165 x 290 mm
Weight	1870 g
Material	AlCuMgPb
Head form	Ø 165 mm
Material Head form	PMMA transparent
Ram	Ø 50